



CREATIVITY ON  
AND OFF STAGE

2019  
2020



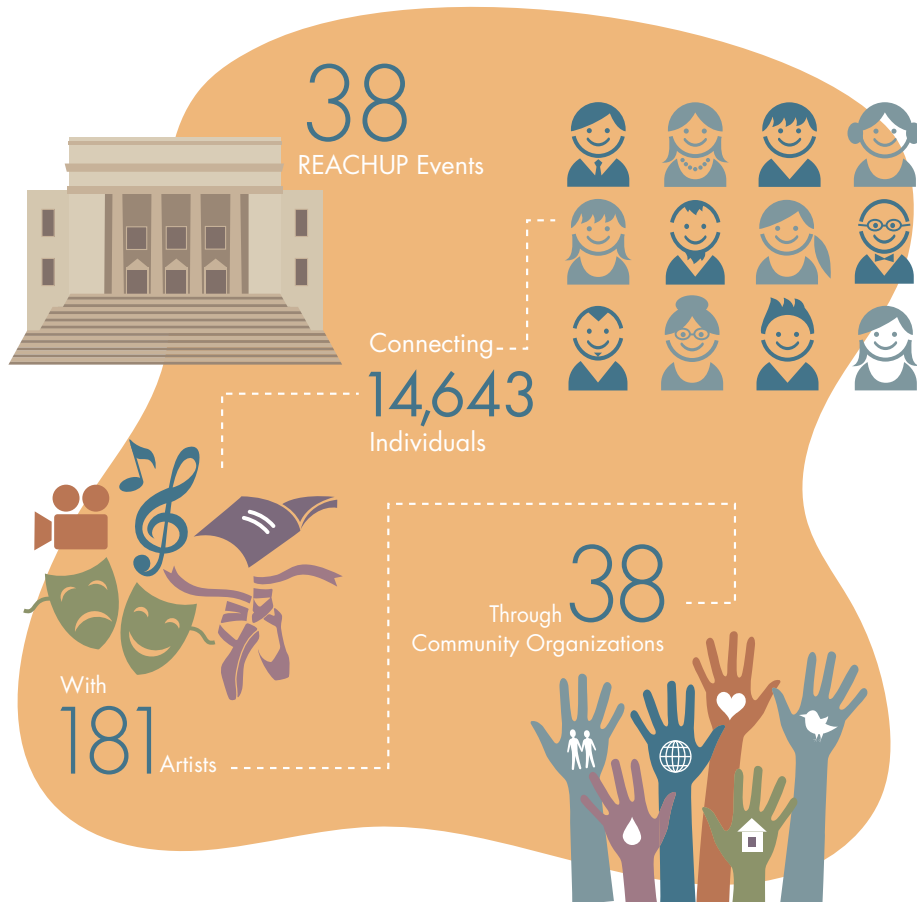
**WE ARE LEARNING** now, more than ever, that to be human means to long for in-person connection. Our last season began with *Doggie Hamlet* at the Salt Lake County Equestrian Park and ended (awfully unexpectedly) at a reading of Mary Dickson's play *EXPOSED* in the Viridian Center. In between, 23,942 audience members enjoyed our truncated season of 14 shows across a range of mediums. We renamed our community engagement work REACHUP and as you will see, despite the COVID-19 disruption, we were still able to offer 38 events for more than 14,000 Utahns. We're proud of all that we did together this year.

Thank you. Thank you for donating to UtahPresents, sponsoring a show, a series, or the entire season. Thank you for buying tickets and going on a journey with us.

I'm proud to share about the work that you generously supported last season. In that telling, I want to focus not just on what we did together but also what we learned. Please enjoy this deep dive behind the scenes on a few projects.

Brooke Horejsi,  
*Executive Director UtahPresents*

# REACHUP 2019-2020





"BE VERY SPECIFIC," SAID MARC BREW. AXIS DANCE COMPANY'S DIRECTOR. BREW WAS TEACHING AN INTEGRATED TECHNIQUE CLASS TO U DANCERS. AFTER MEMORIZING A DETAILED ARM SEQUENCE, THE DANCE MAJORS TRANSFORMED IT INTO A SOLO AND CREATED GROUP CONSTELLATIONS. THIS WAS A NEW TYPE OF TRANSLATION FOR THE STUDENTS, AS MARC IS IN A WHEELCHAIR.

AXIS Dance Company is the foremost physically integrated dance company in the US. AXIS was our first foray into presenting artists with disabilities. Partners helped design ten events with the company including an integrated dance technique class, panel discussion with medical students, teacher workshop with Tanner Dance's Dance for Disabilities, and a student matinee performance.

Presenting AXIS showed us how intentional we need to be about increasing access. We arranged transportation and housing to include multiple accessible vans and rooms, removed pit seating to accommodate every patron in a wheelchair, and audited our website for accessibility.

Going forward, Art Access, a local organization dedicated to building an inclusive and diverse arts community, is helping our staff develop an accessibility plan to make Kingsbury Hall and UtahPresents a better partner for members of the disability community. Our work to increase access at UtahPresents continues.

WE ARE TOO OFTEN CONNECTED ACROSS THE GLOBE BY DIRE NEWS AND STEREOTYPES. ART BRINGS A DIFFERENT PERSPECTIVE, TELLING MULTIPLE STORIES ABOUT A CULTURE FROM WITHIN, RATHER THAN ONE SINGLE STORY FROM THE OUTSIDE.

This season, Indian Ink Theatre Company and Guangdong Modern Dance Company brought tales of nostalgia, place, and memory. Indian Ink blends western mask and physical theatre work with eastern flavors and quirky New Zealand humor. At *Mrs. Krishnan's Party*, Mrs. K longs to return to the India she left many years ago. Under a garden of hanging lights, she learns to find a home away from home with her nephew Jimmy and an audience of relative strangers.

Guangdong Modern Dance Company, the first modern dance company in mainland China, mixed the opulent lines of the old (calligraphy) with the sharp aesthetic of the new (modern dance) to create *Beyond Calligraphy*. In *Ink Wash Landscape*, bodies in exquisite slow motion float against a changing backdrop of landscape, another blending of the old (nature) with the new (technology) to create a home away from home.

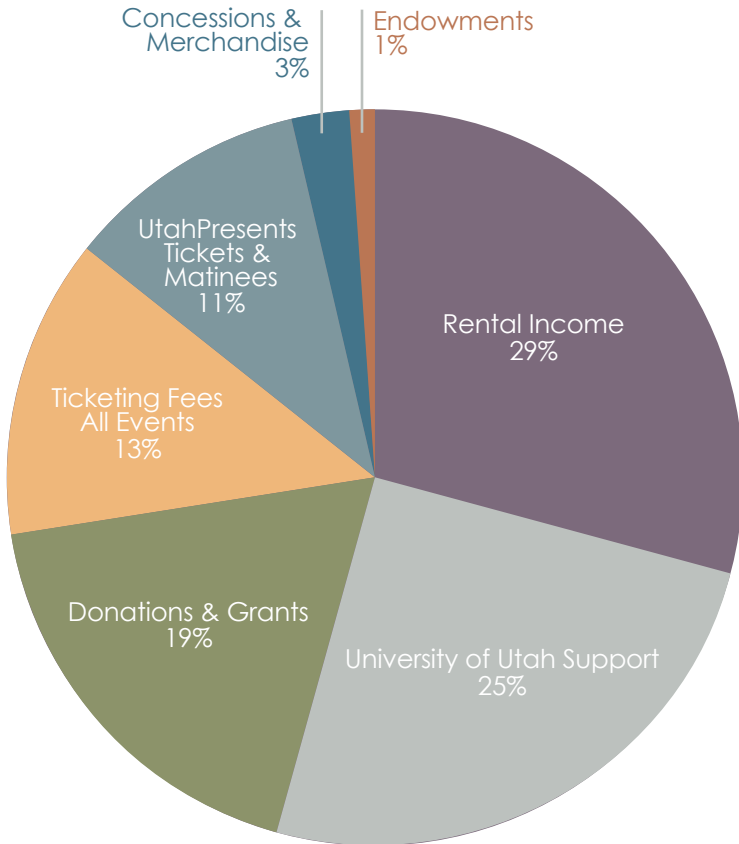
The meticulous lighting and set designs for both shows brought out our best. Through these shows, we learned to dialogue across cultural contexts to make the work shine, finding our shared humanity in the beauty of our individual stories.





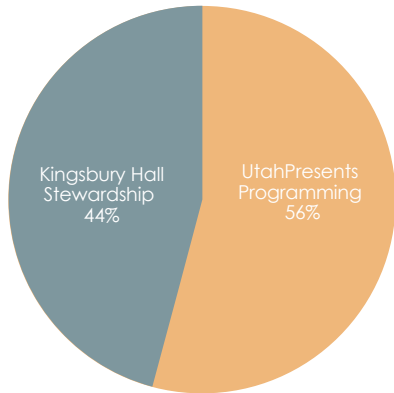
AUDITED FINANCIAL STATEMENTS FOR THE YEAR ENDING JUNE 30, 2019

>>REVENUE





## >>EXPENSE



100% of your donation goes directly towards UtahPresents Programs

### UTAHPRESENTS PROGRAMMING DETAIL



- Programming: Artist fee, housing, transportation, and REACHUP program
- Compensation and benefits
- Outside consultants, repairs & maintenance, parking services, audit, ticket consultant
- Fees: ticket software and banking
- Administrative
- Development & fundraising

# YOU MADE A DIFFERENCE. THANK YOU.

## **25,000+**

Nancy Peery Marriott Foundation  
Salt Lake County Cultural Facilities  
Support Program  
Salt Lake County Zoo, Arts & Parks  
Utah Division of Arts & Museums

## **10,000 - 24,999**

Peter Ashdown  
The Bar Method  
George S. and Dolores  
Doré Eccles Foundation  
Chet and Carrie Goodwin  
Gordon and Connie Hanks  
Hampton Inn & Suites  
Salt Lake City –  
University/Foothill

National Endowment for the Arts  
John and Marcia Price Family  
Foundation  
Salt Lake City Arts Council  
Alice and Kevin Steiner  
The Sam and Diane Stewart  
Family Foundation  
University of Utah Guest House  
& Conference Center  
UtahPresents Advisory Board  
XMission

## **5000-9999**

Arts Midwest  
Kathryn Atwood and  
Jacques D'Astous  
Mary L. Daines

Kathie and Chuck Horman  
Lone Rock Clothing/Design Ink  
Robert and Mikelle Mansfield  
Mitchell Barlow & Mansfield  
Shaun and Wendy McCardell  
Dinesh and Kalpana Patel  
Western States Arts Federation

## **2500-4999**

Marney and Peter Billings  
The B.W. Bastian Foundation  
Sandi Behnken  
Every Blooming Thing  
R. Harold Burton Foundation  
Ferro Investments, LLC  
Mike Ferro

Robert and Mary Gilchrist  
The Richard K. and Shirley S.  
Hemingway Foundation  
Lee and Audrey Hollaar  
Keller Investment Properties  
Kenworth Sales Company  
LIFEWTR  
Steiner Foundation  
Kyle Treadway and Greg Pedroza  
Viita Bone  
Zions Bank

**1000-2499**

Ari Diamonds  
Bombay House  
Patricia Callahan  
Goldman Sachs  
John and Ilana Gurr  
Joshua and Masha Herzbrun  
David and Renae Kirby  
Carolyn and Peter Kowalchik  
Lori McDonald  
New England Foundation  
for the Arts  
Natu Patel

Sanjay Patel  
Tushar Patel  
Semnani Family Foundation  
Umbrella Theater Company  
United Way of Salt Lake  
John and Martha Veranth

**500-999**

John Bergerson and Shawn Kielty  
THE BLOCKS  
Darryl and Ann Butt  
Dhiraj Chand  
Muljibhai and Sharda Chaudhari  
Community Foundation of Utah  
Annie and Jahn Davis  
Eric and Shellie Eide  
EKA Solutions, Inc.  
Fatpipe, Inc.  
Guru Hargobindji Hospitality Inc.  
Greg Hatch and Terry Kogan  
Laurie Hofmann and  
David Classen  
Marian Ingham  
Cosette Joesten  
David and Lisa Kieda

Laxmi Hospitality LLC  
Peter and Michelle Morgan  
Donald and Clara Murphy  
Bankim Patel  
Prakash Patel  
Sally Shatz  
Srilatha and Anurag Singh  
Krista and Jim Sorenson  
Utah Humanities  
Yuvi Petroleum LLC  
Jody and Wai-Ming Wong

**250-499**

Scott and Kathie Amann  
Havilah Clarke  
Tiana Hood and Steven Morales  
Brooke and Michael Horejsi  
Karineh Hovsepian and  
Russell Kelly  
Thelma Iker  
Michael Lobb

*All gifts made between January 1  
and December 31, 2019*



UtahPresents

THE UNIVERSITY OF UTAH  
UTAHPRESENTS  
c/o KINGSBURY HALL  
1395 E. PRESIDENTS CIRCLE  
SLC, UT 84112

NON-PROFIT ORG  
US POSTAGE  
PAID  
SALT LAKE CITY, UT  
PERMIT #1529

We will still be presenting great art! Info on next  
season available at [utahpresents.org](http://utahpresents.org)